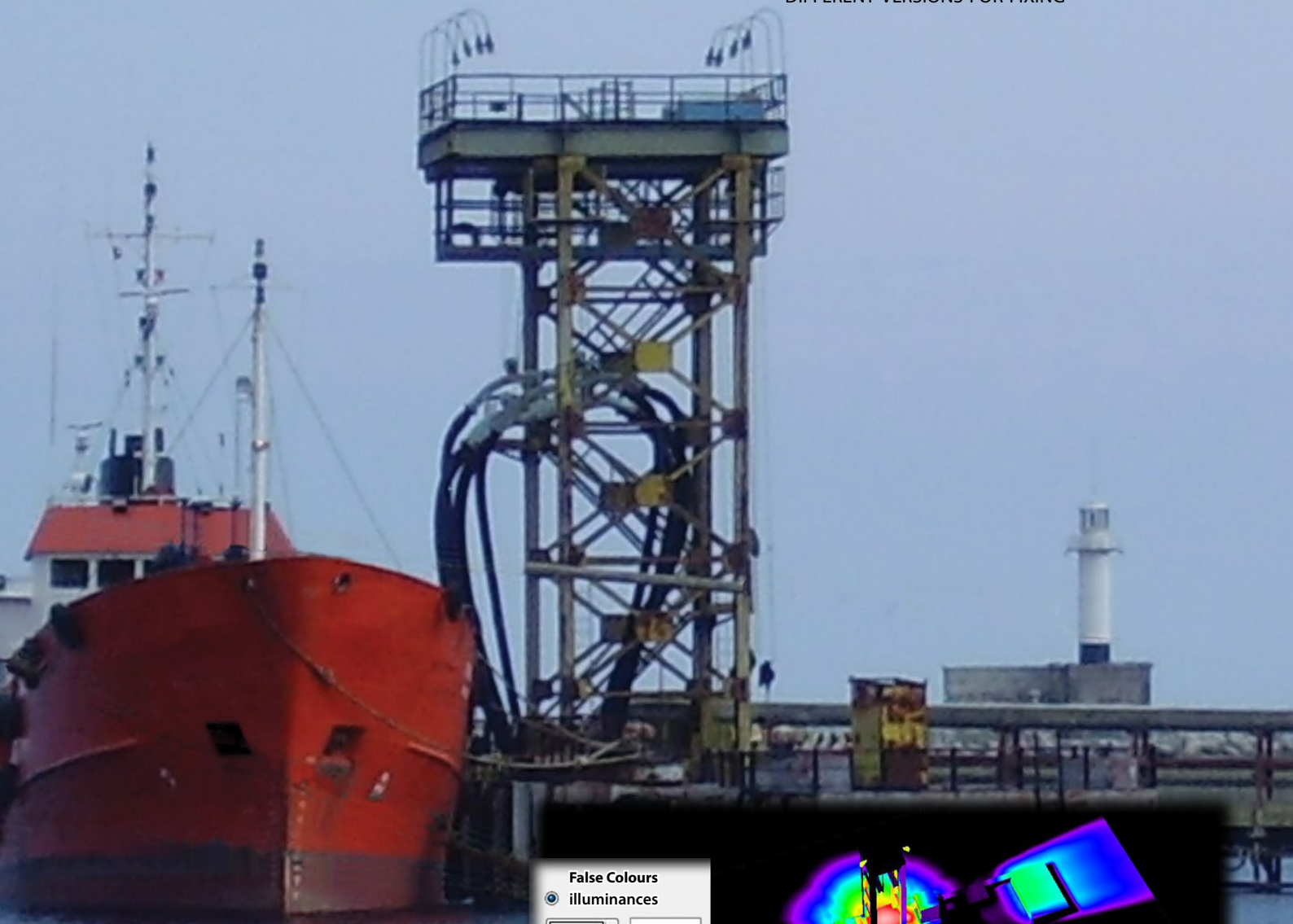


BPP

HERMETIC BLAST PROOF LAMPS

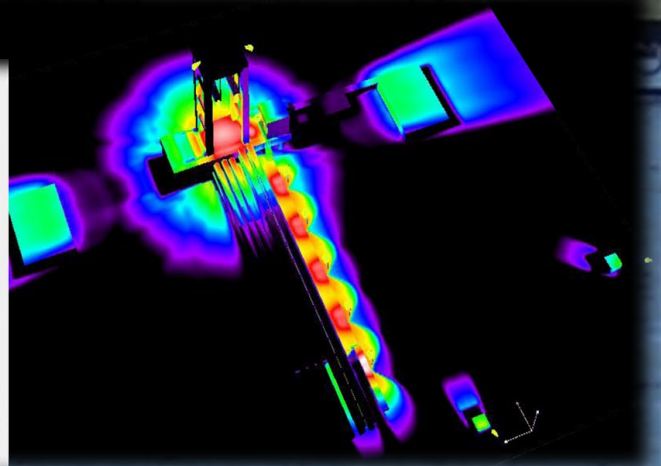
- HIGH ENERGY EFFICIENCY
- NO MAINTENANCE COSTS
- LONG LIFECYCLE
- HIGH QUALITY AREA ILLUMINATION
- ZERO LIGHT POLLUTION
- ERGONOMICAL – CLOSE TO NATURAL LIGHT
- ECOLOGICAL – MERCURY AND LEAD FREE
- VERSIANS WITH AC AND DC POWER SUPPLY
- DIFFERENT VERSIONS FOR FIXING



False Colours

illuminances

<input type="text" value="64.00"/>	64.00 lx
<input type="text" value="32.00"/>	32.00 lx
<input type="text" value="16.00"/>	16.00 lx
<input type="text" value="8.00"/>	8.00 lx
<input type="text" value="4.00"/>	4.00 lx
<input type="text" value="2.00"/>	2.00 lx
<input type="text" value="1.00"/>	1.00 lx
<input type="text" value="0.50"/>	0.50 lx
<input type="text" value="0.00"/>	0.00 lx



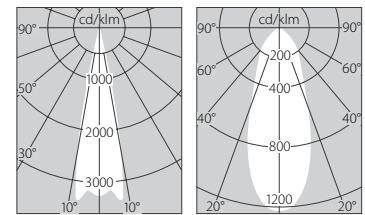
BPP15, BPPdc13

Ex II 2 G Ex e II T6
II 2 D Ex tD A21 IP65 T 80°C

Application: For illuminating indoor premises and outdoor installations of oil, gas, pharmaceutical, chemical, food industries and other., where as a result of the technological and production processes there is a risk for arising a potential explosion atmosphere. The luminaires are suitable for use in explosion hazardous zones: Zone 1; Zone 2 for gas and vapour-air atmosphere and in Zone 21 and Zone 22 as well for atmospheres with flammable dust (powder) there.

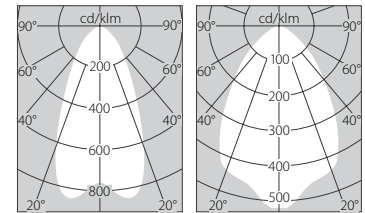
SPECIFICATIONS

	BPP15	BPPdc13
AC Input Voltage	90 ÷ 264 V AC	-
DC Input Voltage	127 ÷ 370 V DC	22 ÷ 30 V DC
Mains Frequency	47 ÷ 63 Hz	-
LED Power		12.4 W
Power Efficiency	83 %	97 %
Total Power	15 W	12.8 W
LED Luminous Flux		1480 lm
Junction Temperature		70°C
Real Luminaire Efficacy (LER)	79 lm/W	92 lm/W
Lens Efficiency		92 %
Real Lamp Luminous Flux (4000 ÷ 6200 K)		1180 lm
Color Rendering Index Outdoor White		CRI – 70 typical
Light Distribution Angle:	S0 - 23°, W1 - 37°, W2 - 56°, W3 - 71°	
Operating Temperature	-30° ÷ +40°C	
Operating Humidity	10 ÷ 95 % RH	
Lifespan L70	> 120 000 h	
Temperature rating	T6	
Ingress protection rating	IP 65	
Electrical Safety Class EN 60598	II	
Body material	aluminum alloy, powder paint	
Material for the protection cover	nonorganic glass	
Power supply cable *	2 x 0.75 mm ² , l = 1.5 m	
Gasket	oil resistant rubber	
Fixing	to a tube, on a ceiling, to a wall, suspended	
Dimensions	ø 138 x 136 mm	
Weight	1.5 kg	
Installation parts **	stainless or powder painted steel	
Connection to the electrical network ***	via a distribution boxes	



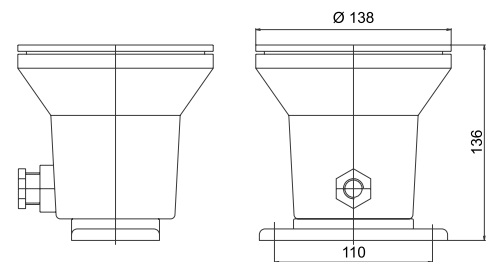
S0 - 23°

W1 - 37°

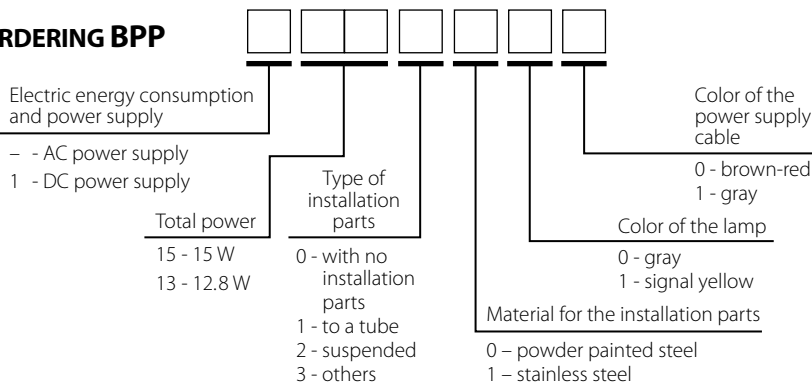


W2 - 56°

W3 - 71°



ORDERING BPP



* Parameters of the power supply cable:

- standard length: 1.5 m
(longer length at special order)
- heat resistant, multicore with flexible copper wire; silicone rubber;
- isolation and coating: VDE 0250, part 1, VDE 0282 part 816;
- manufactures as per: brown-red or gray.
- operating temperature: from - 60° up to +180°C;
- outside diameter: 6.3 mm;
- minimum bending radius: 7.5 D;
- colour of the coating: brown-red or gray.

** Installation parts with angle regulation for directing the light are ordered additionally.

*** Blast prove distribution boxes are ordered additionally.

C E
Quality Assurance

EN61000-6-3:1997, EN61000-6-1:1997
ISO 9001:2008 AQAP 2110