

BPS15

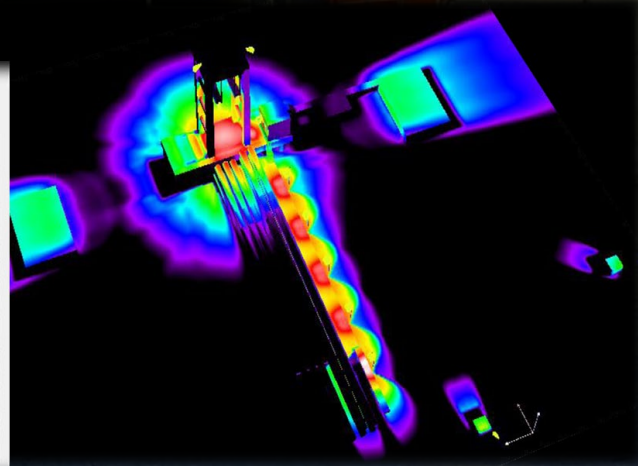
HERMETIC BLAST PROOF LAMPS

- EXTREMELY WIDE ASYMMETRIC LENSES
- ZERO LIGHT POLLUTION
- HIGH ENERGY EFFICIENCY
- NO MAINTENANCE COSTS
- LONG LIFECYCLE
- HIGH QUALITY AREA ILLUMINATION
- ERGONOMICAL – CLOSE TO NATURAL LIGHT
- ECOLOGICAL – MERCURY AND LEAD FREE
- VERSIONS WITH AC AND DC POWER SUPPLY
- DIFFERENT VERSIONS FOR FIXING



False Colours
● illuminances

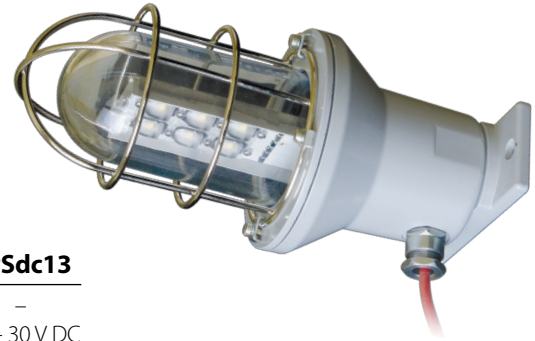
<input type="text" value="64.00"/>	64.00 lx
<input type="text" value="32.00"/>	32.00 lx
<input type="text" value="16.00"/>	16.00 lx
<input type="text" value="8.00"/>	8.00 lx
<input type="text" value="4.00"/>	4.00 lx
<input type="text" value="2.00"/>	2.00 lx
<input type="text" value="1.00"/>	1.00 lx
<input type="text" value="0.50"/>	0.50 lx
<input type="text" value="0.00"/>	0.00 lx



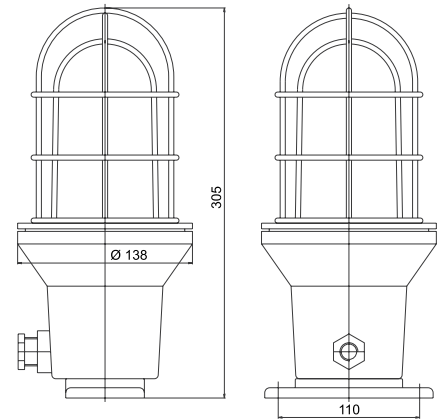
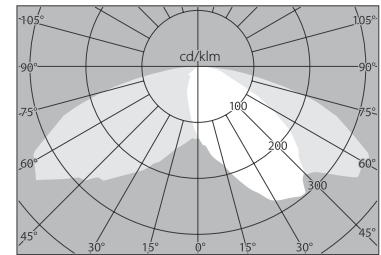
BPS15, BPSdc13

II 2 G Ex e II T6
II 2 D Ex tD A21 IP65 T 80°C

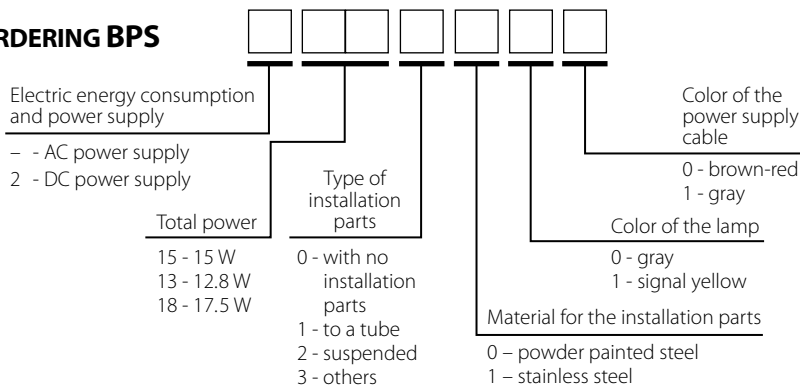
Application: For illuminating indoor premises and outdoor installations of oil, gas, pharmaceutical, chemical, food industries and other., where as a result of the technological and production processes there is a risk for arising a potential explosion atmosphere. The luminaires are suitable for use in explosion hazardous zones: Zone 1; Zone 2 for gas and vapour-air atmosphere and in Zone 21 and Zone 22 as well for atmospheres with flammable dust (powder) there.



SPECIFICATIONS	BPS15	BPS18	BPSdc13
AC Input Voltage	90 ÷ 264 V	32 ÷ 50 V	–
DC Input Voltage	127 ÷ 370 V	42 ÷ 56 V	22 ÷ 30 V DC
Mains Frequency	47 ÷ 63 Hz	47 ÷ 63 Hz	–
LED Power	12.4 W	16.3 W	12.4 W
Power Efficiency	83 %	93 %	97 %
Total Power	15 W	17.5	12.8 W
LED Luminous Flux	1480 lm	2000 lm	1480 lm
Junction Temperature	70°C	75°C	70°C
Real Luminaire Efficacy (LER)	79 lm/W	89 lm/W	92 lm/W
Real Lamp Luminous Flux (4000 ÷ 6200 K)	1180 lm	1560 lm	1180 lm
Color Rendering Index Outdoor White	CRI – 70 typical		
Operating Temperature	-30° ÷ +40°C		
Operating Humidity	10 ÷ 95 % RH		
Lifespan L70	> 120 000 h		
Temperature rating	T6		
Ingress protection rating	IP 65		
Electrical Safety Class EN 60598	II		
Body material	aluminum alloy, powder paint		
Material for the protection cover	metal protecting grid, nonorganic glass		
Power supply cable *	2 x 0.75 mm ² , l = 1.5 m		
Gasket	oil resistant rubber		
Fixing	to a tube, on a ceiling, to a wall, suspended		
Dimensions	ø 138 x 305 mm		
Weight	2.5 kg		
Installation parts **	stainless or powder painted steel		
Connection to the electrical network ***	via a distribution boxes		



ORDERING BPS



- * Parameters of the power supply cable:
– standard length: 1.5 m
(longer length at special order)
– heat resistant, multicore with flexible copper wire;
– isolation and coating: silicone rubber;
– manufactures as per: VDE 0250, part 1, VDE 0282 part 816;
– operating temperature: from - 60° up to +180°C;
– outside diameter: 6.3 mm;
– minimum bending radius: 7.5 D;
– colour of the coating: brown-red or gray
- ** Installation parts with angle regulation for directing the light are ordered additionally.
- *** Blast prove distribution boxes are ordered additionally.