

EP LED OUTDOOR FLOODLIGHT TYPE

WORLDWIDE POWERED

ACTIVE POWER FACTOR CORRECTION (PFC)

LEDs – 148 LM/W

NARROW/WIDE LENSES

HERMETIC

DIFFERENT VERSIONS FOR INSTALLATION

EP – HIGH ENERGY EFFICIENCY

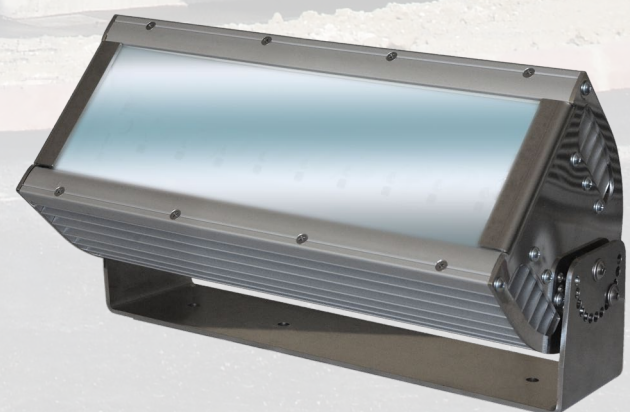
– NO MAINTENANCE COSTS

– LONG LIFECYCLE

– HIGH QUALITY AREA ILLUMINATION

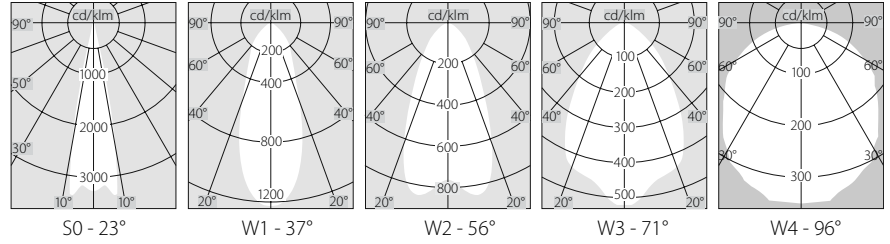
– ERGONOMICAL – CLOSE TO NATURAL LIGHT

– ECOLOGICAL – MERCURY AND LEAD FREE



EP10, EP20, EP30, EP40, EP50, EP60

Purpose The EP type projectors have been designed for lighting of outdoor sites as: industrial zones, warehouses and port terminals, facades of buildings, parks, sports facilities, small settlements and others. The EP flood light may be used with success for indoor lighting in industrial sites too, for example production shops, halls, warehouses etc. where high level of hermetization is required.



SPECIFICATIONS

	EP10*	EP20*	EP30	EP40	EP50	EP60
AC Input Voltage	180 ÷ 264 V AC or 90 ÷ 132 V AC		90 ÷ 305 V AC	90 ÷ 305 V AC	90 ÷ 305 V AC	90 ÷ 305 V AC
DC Input Voltage	257 ÷ 370 V DC or 127 ÷ 186 V DC		127 ÷ 431 V DC	127 ÷ 431 V DC	127 ÷ 431 V DC	127 ÷ 431 V DC
Mains Frequency	47 ÷ 63 Hz					
Power Factor (PF) at 230 V	-			min 95 %		
Power Factor (PF) at 115 V	-			min 98 %		
LED Power	8.2 W	14.4 W	30.4 W	36.9 W	48 W	57.6 W
Power Efficiency	78 %	78 %	88 %	91 %	91 %	91 %
Total Power	10.5 W	17.4 W	34.5 W	40 W	52.5 W	63 W
LED Light Output	148 lm/W					
Current Efficiency	87 %	86 %	81 %	81 %	81 %	81 %
LED Luminous Flux	990 lm	1730 lm	2821 lm	3752 lm	4464 lm	5357 lm
Junction Temperature	70°C	70°C	70°C	70°C	75°C	75°C
Lens Efficiency	84 %					
Real Luminaire Efficacy (LER)	75 lm/W	79 lm/W	72 lm/W	72 lm/W	72 lm/W	72 lm/W
Color Rendering Index for:						
Outdoor White (4000 ÷ 6200 K)	CRI – 70 typical		CRI – 65 typical			
Neutral White (3700 ÷ 5000 K)	CRI > 70		CRI > 75			
Real Lamp Luminous Flux for:						
Outdoor White (CRI 65)	789 lm	1380 lm	2362 lm	3152 lm	4083 lm	4900 lm
Neutral White (CRI 75)	693 lm	1212 lm	2073 lm	2766 lm	3292 lm	3950 lm
Light Distribution Angle	S0 - 23°, W1 - 37°, W2 - 56°, W3 - 71°, W4 - 96°					
Operating Temperature	- 40° ÷ +55°C					
Operating Humidity	10 ÷ 95% RH					
Lifespan L70	> 120 000 h					
Ingress protection rating	IP 66					
Electrical Safety Class	Class II					
Body	Marine Grade Aluminium Alloy Stainless steel or coloured UV protected polycarbonate					
Optical cover	glass tempered					
Built in sensor for automatic "ON/OFF" switching	option					
Dimensions (with Installation parts)	L W H	280 mm 280 mm 160 mm	280 mm 280 mm 140 mm	300 mm 160 mm 140 mm	360 mm 160 mm 140 mm	440 mm 160 mm 140 mm
Weight (with Installation parts)	1.6 kg		1.7 kg	2.1 kg	2.7 kg	3.3 kg
Emergency	3 hours; 320 lm					

ORDERING EP

