



ESP12dc LED FLOODLIGHT TYPE for outdoor security perimeters

12V DC POWERED

NARROW/WIDE LENSES

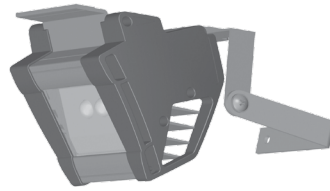
HERMETIC

ESP12dc

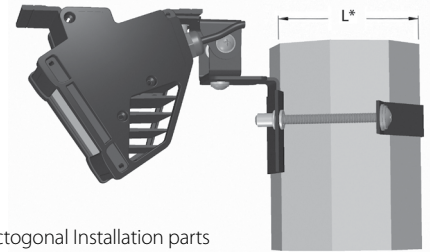
- HIGH ENERGY EFFICIENCY
- NO MAINTENANCE COSTS
- LONG LIFECYCLE
- HIGH QUALITY AREA ILLUMINATION
- ERGONOMICAL – CLOSE TO NATURAL LIGHT
- ECOLOGICAL – MERCURY AND LEAD FREE

ESP12dc10

ESP12dc15



Standart Installation parts



Octogonal Installation parts

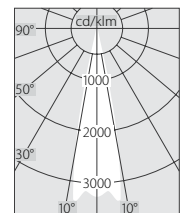
Purpose

- The ESP12dc floodlight have been designed for lighting of outdoor security perimeters.
- ESP12dc can be connected to any system powered from 12V batteries or directly to a 12V power source.

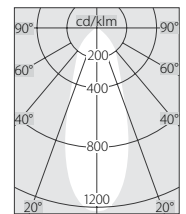
SPECIFICATIONS

	ESP12dc10	ESP12dc15	
DC Input Voltage	12V DC (10÷15V)		
LED Power	9W	13.5W	
Power Efficiency	94%	95%	
Total Power	9.6W	14.2W	
LED Light Output	160 lm/W		
Current Efficiency	84%		
LED Luminous Flux	1209 lm	1813 lm	
Junction Temperature	75°C		
Lens's and Plafond's Efficiency	84%		
Real Luminaire Efficacy (LER)	106 lm/W		
Real Lamp Luminous Flux for Outdoor White (4000 ÷ 6200 K)	1016 lm	1524 lm	
Neutral White (3700 ÷ 5000 K)	943 lm	1414 lm	
Light Distribution Angle	S0 - 23°, W1 - 37°, W2 - 56°, W3 - 71°, W4 - 96°		
Distance with the camera (for S0 = 23°)	black/white – 1 lx color – 5 lx	55 meters 25 meters	66 meters 30 meters
Operating Temperature	- 40° ÷ +55°C		
Operating Humidity	10 ÷ 95% RH		
Lifespan L70	> 160 000 h		
Ingress protection rating	IP 66		
Body	Marine Grade Anodized Aluminium Alloy Stainless steel and coloured UV protected polycarbonate		
Optical cover	glass tempered / PMMA / PC		
Built in protection against	high voltage or reverced (wrong) connection		
Built in sensor for automatic "ON/OFF" switching (with anti-head light function)	option		
Dimensions (without Installation parts)	113 x 110 x 110 mm	148 x 110 x 110 mm	
Weight (without Installation parts)	0.65 kg	0.8 kg	

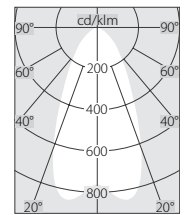
Light Distribution Angle



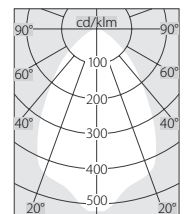
S0 - 23°



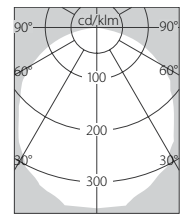
W1 - 37°



W2 - 56°



W3 - 71°



W4 - 96°

ORDERING ESP12dc

