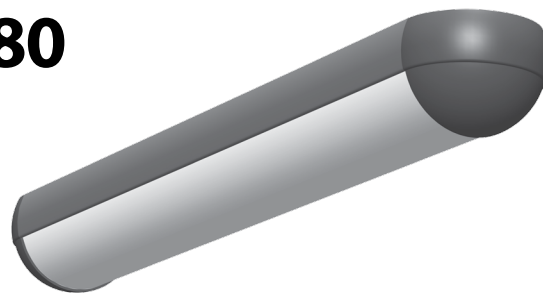


# ICH LED LUMINAIRE FOR INDOOR LIGHTING fixing at the ceiling

- WORLDWIDE POWERED
- LEDs – 160 LM/W
- HIGH ENERGY EFFICIENCY
- NO MAINTENANCE COSTS
- LONG LIFECYCLE
- HIGH QUALITY AREA ILLUMINATION
- ERGONOMICAL – CLOSE TO NATURAL LIGHT
- ECOLOGICAL – MERCURY AND LEAD FREE



# ICH30, ICH40, ICH60, ICH80

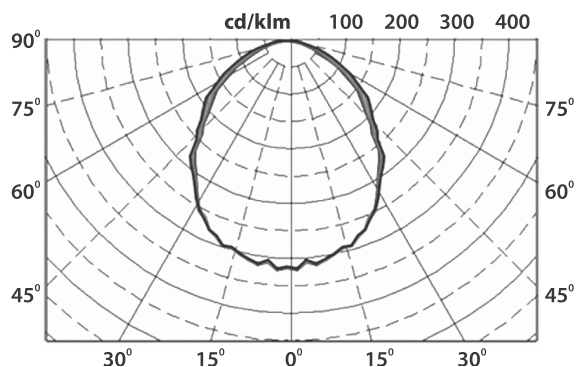


## APPLICATION

The ICH luminaires are meant for lighting different kinds of indoor areas as per the architectural projects. They have been designed for ceiling fixing. "Pendant installation" is possible too.

## SPECIFICATIONS

	ICH30	ICH40	ICH60	ICH80
AC Input Voltage			90 ÷ 305 V	
DC Input Voltage			127 ÷ 431 V	
Mains Frequency			47 ÷ 63 Hz	
Power Factor (PF) at 230 V			min 95 %	
Power Factor (PF) at 115 V			min 98 %	
LED Power	30.4 W	36.9 W	56.7 W	75.8 W
Power Efficiency	88 %	88 %	90 %	88 %
Total Power	34.5 W	42 W	63 W	84 W
LED Light Output			160 lm/W	
Power Efficiency			81 %	
LED Luminous Flux	3822 lm	4862 lm	7394 lm	9720 lm
Junction Temperature			70° C	
Optical Cover Efficiency (Matt)			84 %	
Real Luminaire Efficacy (LER)			98 lm/W	
Real Lamp Luminous Flux for:				
Outdoor White (4000 ÷ 6200 K)	3200 lm	4160 lm	6190 lm	8320 lm
Neutral White (3700 ÷ 5000 K)	2970 lm	3862 lm	5740 lm	7725 lm
Warm White (2600 ÷ 4300 K)	2510 lm	3268 lm	4860 lm	6536 lm
Setting light intensity by a remote control			option	
Operating Temperature			- 20° ÷ +55° C	
Operating Humidity			10 ÷ 95 % RH	
Lifespan L70			> 160 000 h	
Ingress protection rating			IP 65	
Electrical Safety Class			Class II	
Body			Marine Grade Aluminium Alloy and coloured UV protected polycarbonate	
Optical cover (matt)			PMMA or polycarbonate	
Dimensions	L	460 mm	610 mm	780 mm
	W		107 mm	1100 mm
	H		82 mm	
Weight		1.5 kg	2 kg	2.5 kg
				4 kg



Eulumdat (.ldt) files will be sent upon request

## ORDERING ICH

