

EPH LED OUTDOOR FLOODLIGHT TYPE

WORLDWIDE POWERED

ACTIVE POWER FACTOR CORRECTION (PFC)

LEDs – 160 LM/W

NARROW/WIDE LENSES

HERMETIC

DIFFERENT VERSION FIXED

EPH – VERY HIGH ENERGY EFFICIENCY

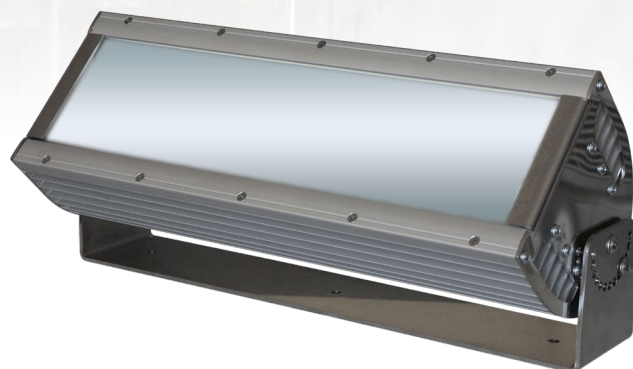
– NO MAINTENANCE COSTS

– LONG LIFECYCLE

– HIGH QUALITY AREA ILLUMINATION

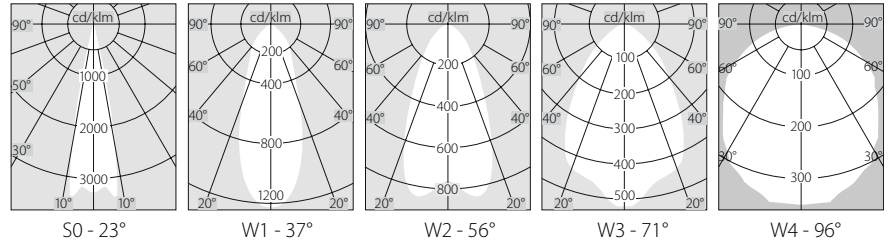
– ERGONOMICAL – CLOSE TO NATURAL LIGHT

– ECOLOGICAL – MERCURY AND LEAD FREE



EPH30, EPH40, EPH60, EPH100, EPH150, EPH240

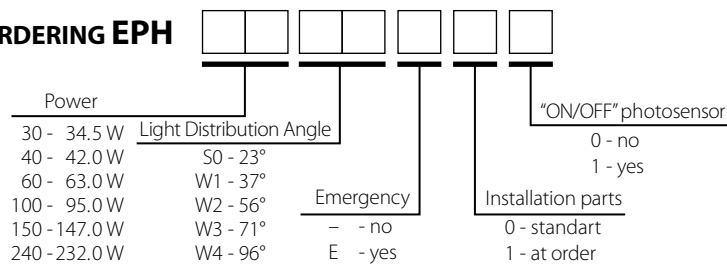
Purpose The EPH type projectors have been designed for lighting of outdoor sites as: industrial zones, warehouses and port terminals, facades of buildings, parks, sports facilities, small settlements and others. The EPH flood light may be used with success for indoor lighting in industrial sites too, for example production shops, halls, warehouses etc. where high level of hermetization is required.



SPECIFICATIONS

	EPH30	EPH40	EPH60	EPH100	EPH150	EPH240
AC Input Voltage			90 ÷ 305 V AC			
DC Input Voltage			127 ÷ 431 V DC			
Mains Frequency			47 ÷ 63 Hz			
Power Factor (PF) at 230 V			min 95 %			
Power Factor (PF) at 115 V			min 98 %			
LED Power	30.4 W	36.9 W	56.7 W	88 W	138 W	218 W
Power Efficiency	90 %	90 %	90 %	93 %	94 %	94 %
Total Power	34.5 W	42 W	63 W	95 W	147 W	232 W
LED Light Output	160 lm/W					
Current Efficiency	81 %					
LED Luminous Flux	3822 lm	4862 lm	7394 lm	11939 lm	18927 lm	29576 lm
Junction Temperature	70°C					
Lens Efficiency	82 %					
Real Luminaire Efficacy (LER)	98 lm/W					
Color Rendering Index (CRI)	65 ÷ 80					
Real Lamp Luminous Flux for Outdoor White (4000 ÷ 6200 K)	3200 lm	4160 lm	6190 lm	9995 lm	15845 lm	24760 lm
for Neutral White (3700 ÷ 5000 K)	2970 lm	3862 lm	5740 lm	9268 lm	14693 lm	22960 lm
Light Distribution Angle	S0 - 23°, W1 - 37°, W2 - 56°, W3 - 71°, W4 - 96°					
Operating Temperature	- 40° ÷ +55°C					
Operating Humidity	10 ÷ 95% RH					
Lifespan L70	> 160 000 h					
Ingress protection rating	IP 66					
Electrical Safety Class	Class II					
Body	Marine Grade Aluminium Alloy Stainless steel or coloured UV protected polycarbonate					
Optical cover	glass tempered					
Built in sensor for automatic "ON/OFF" switching	option					
Dimensions	L	280 mm	340 mm	440 mm	440 mm	680 mm
(with Installation parts)	W			160 mm		
	H	140 mm	140 mm	140 mm	180 mm	200 mm
Weight (with Installation parts)		2.2 kg	2.5 kg	3 kg	4.5 kg	8.0 kg
Emergency	3 hours; 320 lm					

ORDERING EPH



C E EN61000-6-3:1997, EN61000-6-1:1997
 Quality Assurance ISO 9001:2008; AQAP 2110